

THE ATRIUM AT BENT TREE

AVAILABILITY UPDATE

16775 ADDISON ROAD DALLAS, TX



SPACE AVAILABLE: 33,784 RSF
Largest Contiguous Space: 14,352 RSF

Located in the heart of Dallas' "Platinum Corridor," The Atrium at Bent Tree offers convenient access to the Dallas North Tollway, S.H. 190 (Bush Turnpike) and Addison Airport. The Atrium at Bent Tree is 10 minutes from Legacy Park, 20 minutes to Dallas CBD or DFW International Airport.

- ❖ Broadband Connection T1 Access
- ❖ Raised Floor Available
- ❖ Card Key Access After Hours and Weekends
- ❖ 100% Sprinklered
- ❖ Covered and Open Parking
- ❖ Situated in the Northwest Quadrant of Intersection of Addison Rd. and Excel Parkway
- ❖ Convenient Access to Downtown Dallas, I-635, and Legacy Business Park
- ❖ On-Site Delicatessen
- ❖ Competitive Leasing Rates



For Leasing Information Contact:

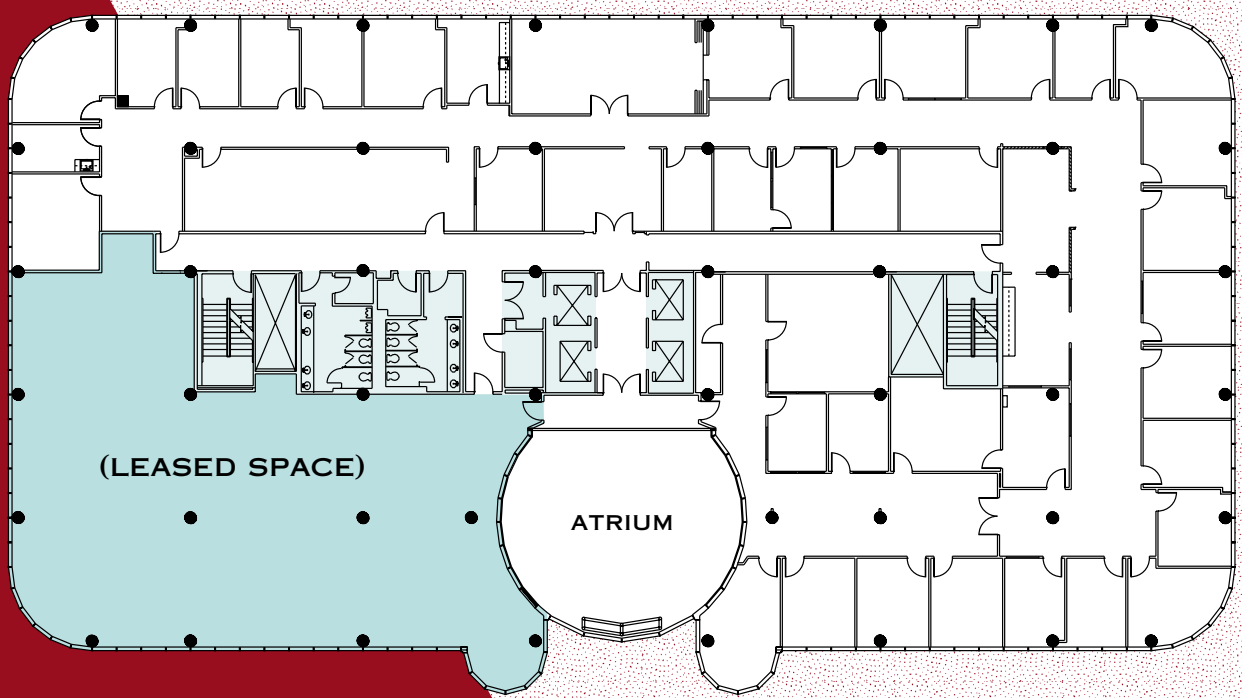
John Hctor
or Tommy Greer
Tel 972.233.1606

email: jhctor@triadproperties.com
email: tgreer@triadproperties.com



F
E
A
T
U
R
E
D

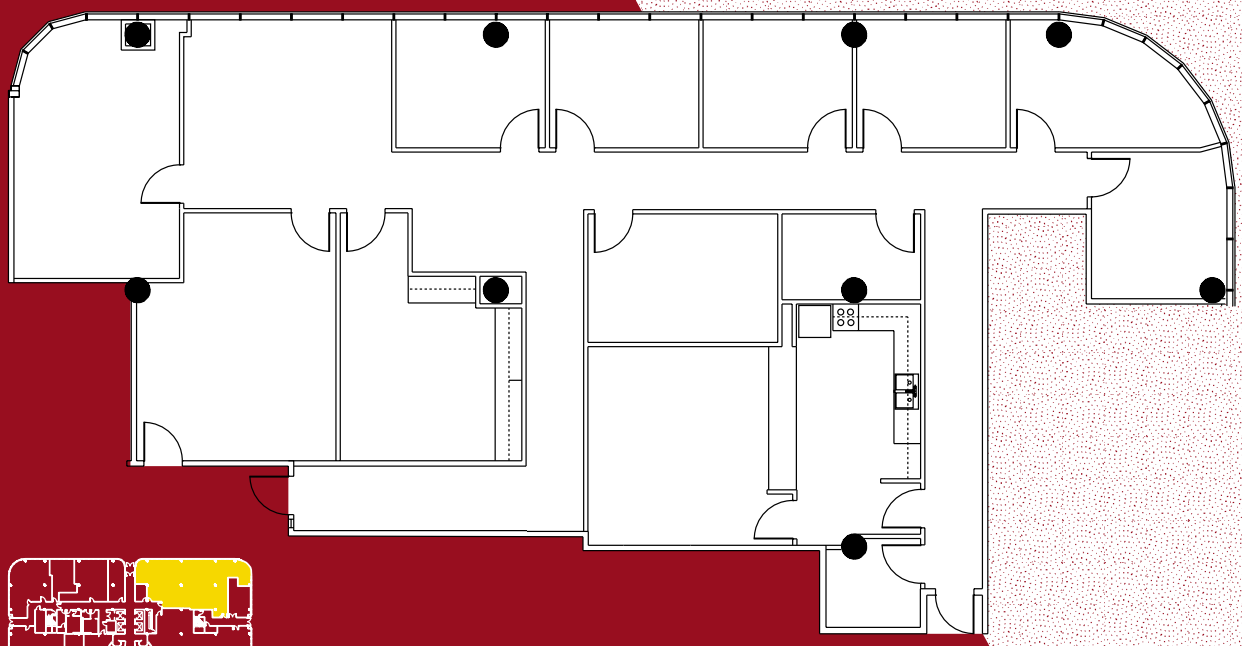
L
O
C
A
T
I
O
N



SUITE 400
14,352 RSF



SUITE 160
4,770 RSF



KEY PLAN
1ST FLOOR

